



## PRESIDENT'S MESSAGE

**Dear Historical Society Members,**

There is so much to be grateful for this past year and especially as we move forward in 2021!

First, I would like to thank our Honorary Board Member, Betsy Adams, for the many years of publishing our Newsletter. Our Vice President, Katie Qualey has graciously taken on this new venture.

I am sorry for the loss of a dear friend and Honorary Board Member, Roger Dressen. Roger's mother Helen was a Rogers, one of the many clans that began with Hilda and John Rogers in the 1800s. Roger was a kind man, devoted to his family, friends, and to our history. He grew up on a farm on Pioneer Trail, close to Marshall's Farm Market. Roger shared many photos and stories of his boyhood adventures in Eden Prairie.

We have had so many great donations from several families these last few months, and we can't wait to share them with you.

At this time, we are remodeling the Museum at City Hall to make it easier to look at maps, photos and our archival materials. The current restoration project at the Cummins-Phipps-Grill House will be complete within the next few months! Yes, finally! The upstairs with four family bedrooms will be re-plastered, painted and ready to welcome you. Plans are in the works for several presentations this winter and spring.

Our **Annual Meeting** on September 1, 2021 is sure to be a great evening as **Steve Kobs shares stories of**

**our former Flying Cloud Drive-In Theatre.** Our meeting will be held at Camp Eden Wood, with appetizers, beverages, as well as the Lions Club selling beer and wine for a nominal fee. We would appreciate an RSVP, but please come regardless. Contact me at: [kc.case@comcast.net](mailto:kc.case@comcast.net) or 952-221-2560.

We are excited to see you all at the Annual Meeting. Thank you for your continuous support.

Sincerely,

**Kathie Case, President**  
Eden Prairie Historical Society

## UPCOMING EVENTS

### ANNUAL MEETING

Wed., Sept. 1st • 6pm  
Historic Camp Eden Wood

### HOLIDAY BOUTIQUE • CPG HOUSE

Friday, Nov. 5th • Noon - 7pm  
Saturday, Nov. 6th • 10am - 4pm

### SANTA'S NORTH POLE EXPERIENCE

Will be back at the Cummins-Phipps-Grill House this year!

End of November through December.

See website for upcoming details –

<https://santasnorthpoleexperience.com>

### EDEN PRAIRIE HISTORICAL SOCIETY

8080 Mitchell Road • Eden Prairie, MN 55344-4485 • (952) 949-8580

The Prairie View • Editor, Katie Qualey • [katie.qualey@gmail.com](mailto:katie.qualey@gmail.com)

Please let us know of any changes or corrections to your mailing or email address by emailing us at: [info@edenprairiehistory.org](mailto:info@edenprairiehistory.org)

## EDEN PRAIRIE HISTORICAL SOCIETY

# The Prairie View

Summer 2021



With the responsibility to protect its past, the Society's mission is to: gather, preserve and protect Eden Prairie's historic artifacts and memorabilia; share the stories of its people and places with audiences of all ages; and foster an understanding and appreciation for historic preservation.

**EDEN PRAIRIE HISTORICAL SOCIETY**  
8080 Mitchell Road  
Eden Prairie, MN  
55344-4485  
(952) 949-8580  
[info@edenprairiehistory.org](mailto:info@edenprairiehistory.org)

### BOARD OF DIRECTORS

**Kathie Case, President**  
**Katie Qualey, Vice President**  
**Chris Honaas-Wildfang, Treasurer & Membership**  
**Ann Higgins, Museum Curator**  
**Tom Achartz, Collective Access**  
**Valerie Ross, Secretary**  
**Kelley Regan, CPG House Chair**  
**Suzanne Berg, Director**  
**Paul Thorp, Director**  
**Bob Prince, Director**  
**Kati Simons, Director**



EDEN PRAIRIE HISTORICAL SOCIETY

## Join us for the 2021 Annual Meeting!

### The Flying Cloud Drive-in...

was right in the middle of a wave of outdoor theatres that covered the country and then vanished. Otto Kobs had an improbable journey from the Minnesota National Guard to entrepreneur and sometimes politician. Otto's grand nephew, Steve Kobs, will share the story.



Members & guests are cordially invited to

**EDEN PRAIRIE HISTORICAL SOCIETY'S**

# Annual Meeting

Wed., Sept. 1, 2021 • 6:00PM

**HISTORIC CAMP EDEN WOOD**

6350 Indian Chief Road • Eden Prairie

SOCIAL & REFRESHMENTS

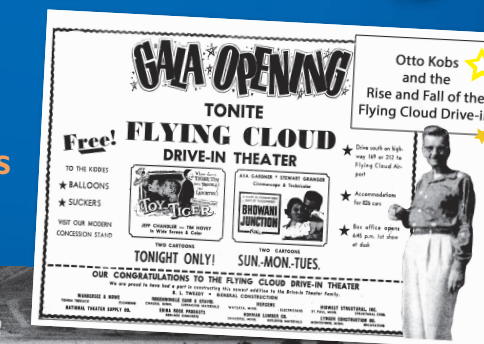
### KEYNOTE SPEAKER:

**Steve Kobs**

EXCELSIOR HISTORICAL SOCIETY

### BECOME A MEMBER OF EPHS

Only \$20 per year  
PER HOUSEHOLD



*We've missed seeing you!*



# DONATIONS • DONATIONS • DONATIONS

We've had some fantastic donations this year! Here are a few stories –

## Cabbage shredder donation from MARCIA & BOB KURTZ.

Bob passed away in May 2020.

Marcia tells the story...

So, near as I can tell, the shredder was in Bob's family a zillion years before December 1937. It was gifted to the midwife who helped to deliver Bob. This said, it's gotta be at least 100+ years old.

October 12, 1991 we moved to our current house. As we were meeting the neighbors we learned that Elizabeth Pachina lived directly across the street from us. Bob recognized the last name. Once we met, there were many stories that I don't remember, between her and Bob. The one I do remember is her tale about being the midwife that helped his Mom deliver him on December 2, 1937. Must have been the barter system, alive and well, during that era because Elizabeth received the Shredder for her assistance with his birth.

Elizabeth gifted it to Bob probably in about 2000, give or take, and it's been in our basement ever since. A note about Elizabeth. She never married and was the gift wrapper for Dayton Hudson her entire career, 47 years. She never drove but when too elderly to take the bus, Mr. Dayton sent his limo for her every morning until she decided she was done. It was delightful to watch the Chauffeur go to her door, help her down the stairs and tenderly place her in the car

most every weekday morning. I believe this stopped maybe around 2010, again, give or take. Not long after that, she went to the Hopkins Care Center and we lost touch, after a few visits.

Bob was delivered on the farm in Chanhassen. If you're heading West on 62 into Chanhassen there's that last curve and a street that goes straight. His family lived down that road and farmed a lot of the land. Disaster struck and they had to move and leave their homestead.

The land they had included the lake that's somewhere near that road and a lot of acreage was lost. It was apparently important because there is a Kurtz Lane on Hwy. 4 south of 62 Crosstown.



**The 100+ year old cabbage shredder is in our kitchen display at the Museum in City Hall.**

**A couple beautiful antique chests, Red Wing Crocks and pottery, antique toy trains, weathervane, suitcase, Kouba print and many other beautiful items were donated by CAROL STANDAL from the farm that was once owned by Ernest Peterson. Many Thanks!**



# And More DONATIONS!

**TOM & DEB JOHNSON**  
Farm artifacts such as 2 large saws, train auger, large oxen yolk



**Spinning Wheel from the PLANK/DALUGE FAMILY**



**PAT McCORMICK** • A book once owned by Harriet Phipps with her writing, and pictures and negatives of daughter, Mildred and the Farm

**LORI DRESSEN CHRISTIAN** • An antique china hutch originally owned by Helen Rogers Dressen

**MARY MACKMILLER**  
6 piece set of antique painted doll house furniture & small candy jar



**MARGARET PLANK** • Many items from her parents collection, Agnes & Willard Daluge. Antiques from the Bavarian Alps in Germany. **AMAZING STORY TO COME!**

*Thank you!*